

HAI/AR Monthly Digest

Utah Department of Health Healthcare Associated Infections/Antimicrobial Resistance Program

Issue 8 | March 2022

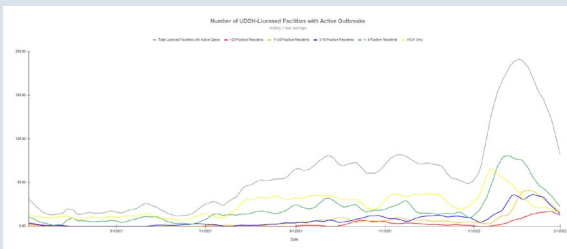
"If we had no winter, the spring would not be so pleasant."

~ Anne Bradstreet

Did you read this month's digest?

[YES](#) [NO](#)

Utah LTCF Situational Update



New UDOH COVID-19 Guidance Documents for LTCFs

Updated

- COVID-19 Guidance for Visitors
- Monoclonal Antibody Therapy FAQ
- Healthcare Worker Screening Tool
- COVID-19 Recommendations Based on Vaccination Status Chart

New guidance documents can be found on the Long-Term Care

Updates

HAI/AR Update

MIST Team Updates

- Effective March 17th, the MIST team will no longer be available to provide COVID-19 treatments. Facilities should work with their medical directors, pharmacy partners, and corporate groups to create a plan to provide COVID-19 treatment to their residents.

Utah National Guard Support



UTNG Nurse Aide Training at Avalon Health Care

- To help mitigate staffing challenges created by the recent surge in COVID-19, the Utah National Guard provided support to nearly 30 facilities across the state with an overwhelmingly positive response. UTNG support will be available through the week of March

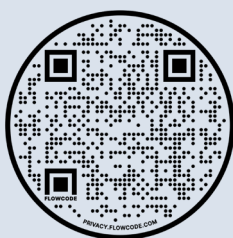
Facilities webpage, under the [For Long-Term Care Facility Providers](#) section.

Mental Health Resources

To find out more about mental health resources offered in Utah, click [here](#).

Questions?

For questions, visit our [Long-Term Care Facilities webpage](#) or email us at hai@utah.gov.



11th. Please submit requests for UTNG support prior to noon on Thursdays for the following week.

Staff Isolation/Quarantine Calculator

- The HAI Team developed a COVID-19 Staff Isolation/Quarantine Calculator that can assist facilities with deciding if staff should isolate or quarantine. The tool can be accessed [here](#).

Long-Term Care Facility Webpage Update

- The [Long-Term Care Facility Webpage](#) has been updated. Please watch for additional updated guidance documents over the next few weeks.

CDC Update

- Up to date on vaccination: Up to date means being fully vaccinated and receiving booster doses when eligible.

Updated Guidance Documents

- [SARS-CoV-2 Antigen Testing in Long Term Care Facilities](#) (2/17/22)
- [Clinical Questions about COVID-19: Questions and Answers](#) (2/9/22)
- [Interim Infection Prevention and Control Recommendations to Prevent SARS-CoV-2 Spread in Nursing Homes](#) (2/2/22)
- [Interim Infection Prevention and Control Recommendations for Healthcare Personnel During the Coronavirus Disease 2019 \(COVID-19\) Pandemic](#) (2/2/22)
- CDC has updated [guidance about COVID-19 community levels](#) along with recommended individual and household-precautions and community-level prevention strategies that should be taken at each level. The rationale for these changes is described in the guidance. **These COVID-19 community level recommendations do not apply in healthcare settings**, such as hospitals and nursing homes. Healthcare settings should continue to follow [CDC's infection prevention and control recommendations for healthcare settings](#), which continue to use [community](#)

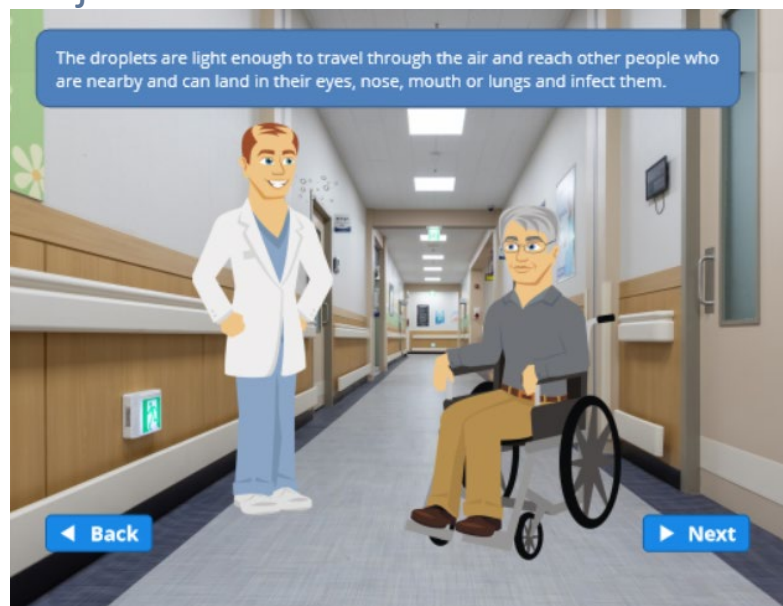
[transmission levels](#) as a metric for stratifying some IPC measures (e.g., use of source control, screening testing).

Spotlights

Please send us stories or pictures that highlight the amazing work you and your facility have accomplished during the pandemic. We want to spotlight your successes. Email your HAI/AR contact or hai@utah.gov to share your stories.

Education/Resources

Project Firstline Beta Test



- The Project Firstline Utah team is preparing to beta test Module 1: Infection Prevention Basics. The target audience of this module is frontline staff (CNAs, environmental and dietary staff, receptionists, etc.). If you would like your facility to participate in the beta test, email janellekammerman@utah.gov.

Mental Health Resources

- The Agency for Healthcare Research and Quality (AHRQ) created 5-minute learning modules for frontline staff about emotional health and resilience. To access these modules, click [here](#).

LTC PAC Project ECHO Sessions

- Join us for the next Long-Term and Post-Acute Care Project ECHO presentation on Wednesday, **March 9, 2022** from **11 am to 12 pm**
 - Linda Rider, a UDOH Infection Preventionist, and Angela Weil, the UDOH Clinical Consultant, will present on *Clostridioides difficile*.
 - Register [here](#).
- We would love to have your input on future sessions. Please take [3 minutes to answer our survey!](#)

Antimicrobial Resistance in Utah

Since February 1, 2022

Multidrug Resistant Organisms (MDRO) Big 5 Carbapenamase Producers* and other Producers

Cases: 0	Outbreaks: 0
----------	--------------

*VIM, IMP, NDM, KPC, OXA-48

Interfacility Transfer Form

- The Utah Department of Health Interfacility Transfer Form should be used when transferring patients to other healthcare facilities, regardless of MDRO status. This form is vital to help receiving facilities understand any potential precautions or infection prevention protocols necessary upon admission. Use of this form will help reduce the transmission of MDROs. To view the form, click [here](#).

Did you read this month's digest?

[YES](#) [NO](#)

To stop receiving the HAI/AR Monthly Digest, please reply to this email or email janellekammerman@utah.gov directly. Thank you.

