

HAI/AR Monthly Digest

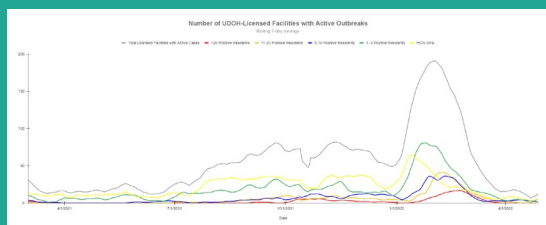
Utah Department of Health and Human Services Healthcare Associated Infections/Antimicrobial Resistance Program

Issue 10 | May 2022

Did you read this month's digest?

YES NO

Utah LTCF situational update



New DHHS COVID-19 guidance documents for LTCFs

Updated

- Managing healthcare personnel in LTCF
- LTCF rapid response recommendations and resources
- Monoclonal antibody therapy FAQ
- Recommendations based on vaccination status and transmission chart

New guidance documents can be found on the Long-Term Care Facilities webpage, under the [For Long-Term Care Facility Providers](#) section.

Updates

HAI/AR update

Community transmission rates and PPE use

- Nursing facilities and long term care (LTC) communities should continue to monitor [community transmission rates](#) in their county and implement the appropriate [LTC infection prevention and control recommendations based on the transmission rate and vaccination status](#).

HAI social media account

- The DHHS HAI/AR and Disease Response, Evaluation, Analysis, and Monitoring (DREAM) programs teamed up to create a joint social media account. You can follow us on Facebook at Utah DREAM & HAI or on Instagram @Utah.DREAM.HAI.

Infection Control Assessment and Response (ICAR)

- ICARs are a great resource to help facilities protect their residents and staff. This half-day collaborative assessment assists facilities to review infection prevention and control practices in their facility. ICARs are designed to highlight strengths as well as identify gaps and provide resources to support excellence in infection prevention.
- The HAI team will reach out soon with details on how to schedule ICARs in assisted living and intermediate care (ICF/IID) facilities. Skilled nursing facilities will be scheduled through Comagine Health who has partnered with the HAI team.
- For questions or to schedule an appointment, email HAI@utah.gov.

Visitation guidance

- Facilities must allow indoor visitation at all times for all residents beyond compassionate care situations. Please

Mental health resources

Visit the [mental health resources site](#) for information on available mental health resources in Utah.

Questions?

For questions, visit our [Long-Term Care Facilities webpage](#) or email us at hai@utah.gov.



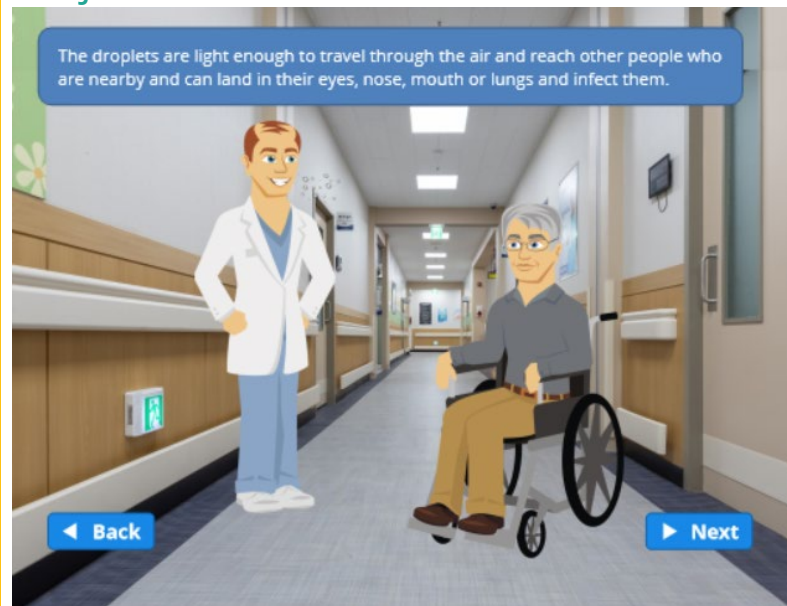
review the [UDOH COVID-19 Visitation Guidance for Long-term Care Facilities](#) for more information on infection prevention and control guidance to conduct safe visits.

Spotlights

Please send us stories or pictures to highlight the amazing work you and your facility have accomplished during the pandemic. We want to spotlight your successes. Email your HAI/AR contact or hai@utah.gov to share your stories.

Education/Resources

Project Firstline beta test



- The Project Firstline Utah team is nearly ready to beta test Module 1: Infection Prevention Basics. The target audience of this module is frontline staff (CNAs, environmental and dietary staff, receptionists, etc.). If you would like your facility to participate in the beta test, email janellekammerman@utah.gov.

Mental health resources

- The Agency for Healthcare Research and Quality (AHRQ) created 5-minute [emotional health and resilience learning modules](#) for frontline staff.

LTC PAC Project ECHO sessions

- Join us for the next Long-Term and Post-Acute Care Project ECHO presentation on **Wednesday, May 11, 2022** from **11 am to 12 pm**.

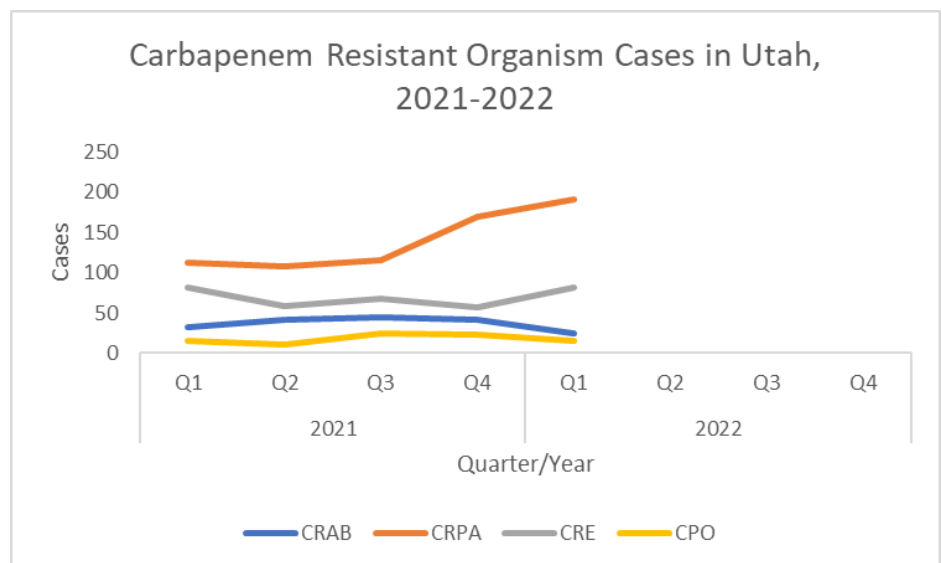
- Title: Transmission-Based Precautions and Enhanced Barrier Protections for Multidrug Resistant Organisms
- Register [here](#).
- We would love to have your input for future sessions. Please take [3 minutes to answer our survey!](#)

Antimicrobial resistance in Utah

Since May 1, 2022

Carbapenem-resistant organisms

Starting this month, we will begin updating the number of carbapenem-resistant organism (CRO) cases for each quarter. The CROs shown in the graph below include: carbapenem-resistant *Acinetobacter baumannii* (CRAB), carbapenem-resistant *Pseudomonas aeruginosa* (CRPA), carbapenem-resistant Enterobacterales (CRE)*, and carbapenemase-producing organisms (CPO)** .



*The Enterobacterales order contains multiple bacteria species that are not required to be reported to Utah DHHS, but are of interest to the Centers for Disease Prevention and Control (CDC) and Utah DHHS. Therefore, the CRE count may not be a comprehensive count of all CRE cases in Utah.

**The CPO counts are also included in the CRAB, CRE, and CRPA counts because CPOs are also carbapenem-resistant organisms.

Interfacility transfer form

- The Utah Department of Health [Interfacility Transfer Form](#) should be used upon patient transfer to other healthcare facilities to communicate infection control precautions to the next healthcare provider and prevent transmission of multidrug-resistant organisms (MDRO)s.

Did you read this month's digest?

[YES](#) [NO](#)

To stop receiving the HAI/AR Monthly Digest, please reply to this email or email janellekammerman@utah.gov directly. Thank you.



Utah Department of
Health & Human
Services